



JBL SOUND POWER SERIES

4728AP

BI-RADIAL® STAGE MONITOR SYSTEM

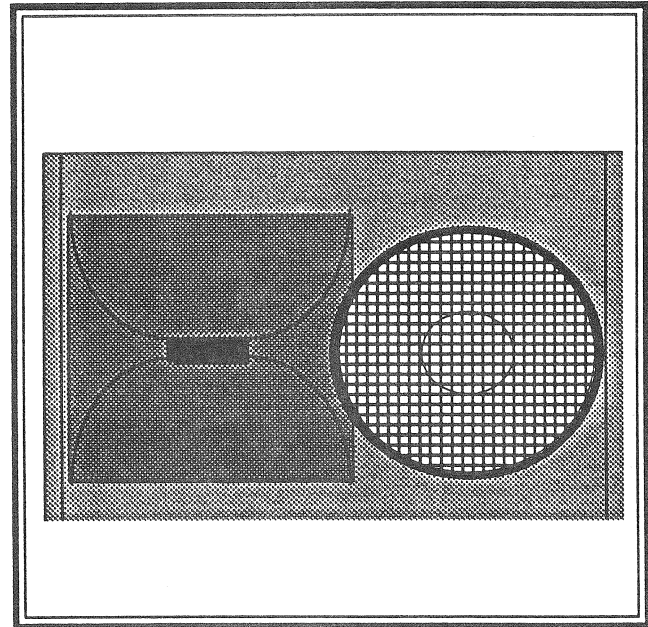
PRELIMINARY SPECIFICATION SHEET

FEATURES:

- ▶ Smooth, accurate response from 60 Hz to 20 kHz
- ▶ Dual angle, low profile wedge design
- ▶ Internal passive 1200 Hz dividing network
- ▶ Tightly controlled 100° x 100° dispersion
- ▶ Rugged and attractive finish

The JBL 4728AP is a two-way full-range stage monitor/foldback loudspeaker intended for any stage application demanding high quality sound reproduction and excellent dispersion control from a compact unit. An unique offset tapered cabinet design allows the 4728AP to be used at 22.5° and 45° angles, or it may be stood on end for horizontal dispersion.

A JBL 2206H 300 mm (12 in) high power, low distortion cone driver with protective metal grille assures uncompromising low end response, while JBL's hidden port design keeps bass output at a maximum and cabinet size to a minimum. The 4728AP's outstanding high end is produced by a JBL 2426J titanium diaphragm compression driver mounted on a 25 mm (1 in) throat 100° x 100° JBL 2344A horn. The result is exceptionally smooth, extended frequency response and uniformly wide directivity that make the 4728AP the best choice in stage monitors. Finished in an unobtrusive dark grey, the 4728AP's low profile is the perfect complement to any stage setup.



The 4728AP is fitted with an internal crossover for passive, single-channel amplifier operation. Input wiring connects to a single 4-pin Speakon™, while an additional 4-pin Speakon carries loop-through signals for direct connection to a second 4728AP. JBL's special 4-conductor cabling is available as an option.

Heavy duty Finnish birch plywood construction ensures durability and resistance to the damaging effects of road use. Unique cut-away handles are integral to the cabinet, not bolted on. An optional stand may be employed, using the fitted 35 mm pole-mount adaptor. Finished to touring standards in a long-lasting dark grey acid-hardened paint, the 4728AP can deliver both looks and performance.

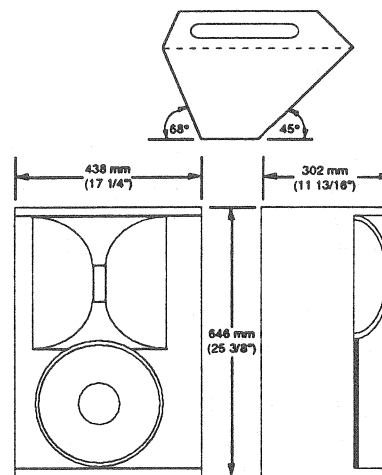
PRELIMINARY SPECIFICATIONS

Model 4728AP

Components	1 – JBL 2206H low frequency transducer 1 – JBL 2344A Bi-Radial horn 1 – JBL 2426J compression driver
Frequency range (-10 dB)	60 Hz—20 kHz
Frequency response (± 3 dB)	70 Hz—17.5 kHz
Enclosure tuning	60 Hz
Sensitivity	95 dB (2.83 V, 1 m) *
Power capacity	TBA
Maximum SPL (1 m, continuous program)	TBA
Crossover frequency	1200 Hz
Coverage angles (-6 dB nominal)	100° horizontal 100° vertical
Nominal impedance	8 ohms
Connectors	2 – Neutrik Speakon NL4MPR
Dimensions	646 mm H x 438 mm W x 302 mm D (25 3/8" H x 17 1/4" W x 11 13/16" D)
Finish	Dark grey acid-hardened paint with black steel protective grille
Net weight	22 kg (48 lb)

Accessories:

MTA 19670	Tilt Adapter
MTA 21300	Crank-Up Stand
MTA 21336	Support Pole for use with 4742A/82A
MTA 21465	Heavy Duty Speaker Stand
MTA 24100	Light Duty Wall Bracket
MTA 24105	Double-Mount Adapter
NL4FC	Neutrik Speakon Cable Connector, 4-Pin
NL4MM	Neutrik Speakon Coupler, 4-Pin
3700-4	4-Wire Speaker Cable
3705-4	4-Wire Speaker Cable, 5 m, with NL4FC Connectors
3720-4	4-Wire Speaker Cable, 20 m, with NL4FC Connectors
4700APNT	Touch-Up Paint



* 2.83 V is 1 W across an 8 ohm load.

JBL continually engages in research related to product improvement. New materials, production methods and design refinements are introduced into existing products without notice as a routine expression of that philosophy. For this reason, any current JBL product may differ in some respect from its published description but will always equal or exceed the original design specifications unless otherwise stated.

